

For Engines' Safety

To tear ourselves away from our busy working life, we may choose a driving vacation to reach our favorite destinations together with our families or friends.

In this issue, we would like to highlight a particular water pump installation error by learning from a claim made from our customers, which, if repeated, could make a mess of a wonderful vacation.

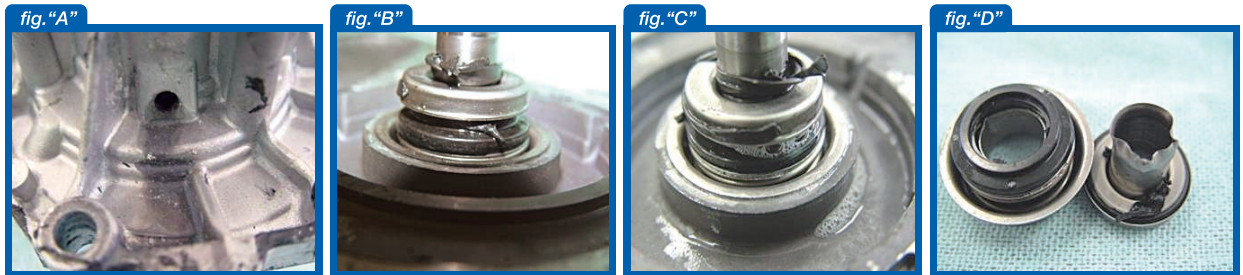
Details of Claim

Leakage was reported by driver after only 1,200km driving (about 3 weeks).

Inspection report of GMB QA

- 1 Leakage mark can be recognized * see [fig. "A"](#)
- 2 Result of negative pressure leakage test: NG
(leakage is found from sliding surface of mechanical seal)
- 3 Liquid gasket is winding around body cavity and mechanical seal * see [fig. "B" and "C"](#)
- 4 Liquid gasket clog the mechanical seal * see [fig. "D"](#)

From the result of our QA inspection we concluded this water pump failure was caused by liquid gasket being over applied on gasket surface, which leached into the coolant and was drawn into the sliding surface of mechanical seal - see pictures below.



For your customers', families' and friends' uninterrupted driving, please apply adhesive materials by appropriate method and volume. (spread liquid gasket approximately 1.5 ~ 2.5mm width uniformly on gasket face only)

Have A Nice Vacation!

AVAILABLE NOW!

WATER PUMP

MAZDA

WATER PUMP	TENSIONER & IDLER BEARING	CAR NAME	ENGINE MODEL	MODEL	YEAR	
GWMZ-56A 8AG2-15-010 8AG2-15-010A 8AG2-15-010B 8AG2-15-010C	GT20010 FE1H-12-700A	CAPELLA	F8 1800	GD8A/8AF/8P/8PF	89.04-91.10	
		COSMO	FE 2000	GD8R/8RF/8S	89.04-91.10	
		EUNOS 300	FE-M 2000	GD8B,GDEB	88.02-91.10	
	GT20030 FE3N-12-730	LUCE PERSONA TELSTAR		FE-N 2000	GDEA,GDEP,GDES	87.05-91.10
					GDEAF,GDEPF	87.04-91.10
					GDER	87.07-91.10
					GDERF	87.06-91.10
					GV8WF	94.10-97.10
					GV8WF/8W	92.08-94.10
					GVER,GVERF	90.08-97.10
					GVEW,GVEWF	96.06-97.10
					MA8P	90.02-92.03
	MA8PE/EPE	89.11-92.01				
	MAEP	88.10-92.03				

TOYOTA

WATER PUMP	TENSIONER & IDLER BEARING	CAR NAME	ENGINE MODEL	MODEL	YEAR
GWT-135A 16100-29195 16100-29196 16100-29206		PROBOX SUCCEED	1NDTV 1400	NLP51V	02.06-

IMPORTANT NOTIFICATION

GMB is working on global Ecological concern. Hexavalent Chromium is soon to disappear from our products.